

高清智能网络摄像机

HD Intelligent IP Camera

KEDACOM

快速安装指南

Quick Start Guide

一 前言

感谢您购买我司产品，如对本公司产品有疑问或需要，请随时和我们联系。

此内容（手册）的目的是确保用户正确使用本产品，以避免危险或财产损失。在使用产品之前，请认真阅读此手册并妥善保存以备日后参考。如果用户因没有按照以下安全说明，致使设备不能正常使用或损坏等情况，我司恕不负责，感谢您的配合。

二 安全使用注意事项

1. 电源要求

- 请在安装使用设备过程中，严格遵守当地各项电气安全规定。
- 请使用满足安全电压要求的电源，在设备运行之前检查供电电源是否正确。
- 请在安装配线时装入易于使用的断电设备，以便必要时进行紧急断电。
- 请保护电源软线免受踩踏或紧压，特别是插头、电源插座和从装置引出的接点处。
- 请在断电状态下连接电源、告警、音频、RS485等线缆，严禁在设备上电的情况下连线。

2. 使用环境要求

- 请勿将摄像机对准强光（如灯光照明、太阳光等处）聚焦，否则容易引起过亮或漏光现象（这并非摄像机故障），也将影响摄像机寿命。
- 请在允许的湿度和温度范围内运输、使用和存储设备。
- 请勿将设备置于潮湿、多尘、极热、极冷、强电磁辐射或照明条件不稳定等场所。
- 请勿让任何液体流入设备，以免内部元件受损。
- 请勿阻挡设备附近的通风口，以免热量积蓄。
- 请在运送设备时，重新以出厂时的包装进行包装，或用同等品质的材质包装。
- 请勿在运输、储存及安装过程中重压、剧烈震动、浸泡设备。

工作环境	
工作电源	AC24V±10%
功耗	35W Max (其中补光灯最大24W)
温度	-40°C~+70°C
湿度	10%~95% (无凝结)
海拔高度	-60m~3000m
大气压	86kPa~106kPa

3. 日常维护与保养

- 请勿直接接触设备发热部件，以免烫伤。
- 镜头沾染灰尘或油脂时，用棉布或镜头擦拭布擦拭。若遇污垢难以清除，蘸上少量镜片清洁液，自镜头中心向外旋转轻轻擦拭，直到干净为止。禁止使用有机溶剂（苯、酒精等）对镜头和护罩前镜进行除尘、清洁。
- 请不要以任何方式拆卸或修改产品。（对未经认可的修改或维修导致的问题，本公司不承担任何责任）。
- 如果设备工作不正常，请联系经销商或最近的服务中心。

4. 特别声明

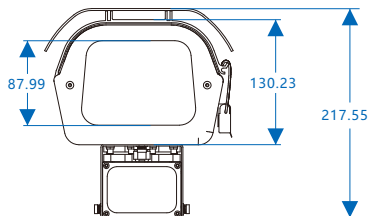
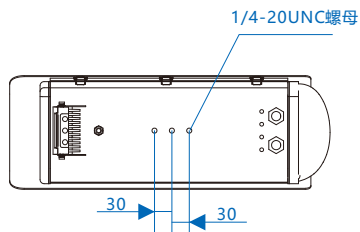
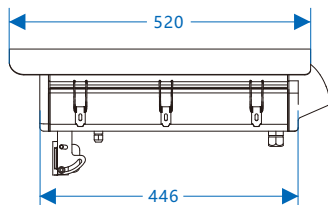
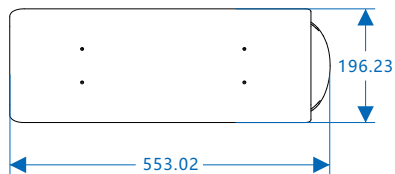
- 本手册中的图示仅供参考，产品请以实物为准。
- 我们尽最大努力来保证本手册信息的正确性，如因升级等原因发生信息修改，恕不另行通知。
- 本手册能作为多个型号产品的使用指导，但并不一一列举每个产品的使用情况，请您根据实际产品自行对照。
- 本产品使用IPCSearch激活后方能使用，激活时请填写有效邮箱，方便找回密码。IPCSearch请至官网下载，下载地址：<https://www.kedacom.com/cn/softtools/index.jhtml>
- 为了提高产品网络使用的安全性，建议您设置高强度密码：密码长度必须达到8-16个字符，且至少由数字和字母或特殊字符中的两种或两种以上类型组合而成。请您定期更改用户名的密码，建议每三个月更新一次密码。如果设备在较高安全风险的环境中使用，建议每月或每周更新一次。请妥善保管好您的用户名与密码。
- 将本产品接入互联网需自担风险，包括但不限于产品可能遭受的网络攻击、黑客攻击、病毒感染等，本公司不对因此造成的产品工作异常、信息泄露等问题承担责任，本公司将及时为您提供产品相关技术支持。
- 如需获取最新文档，请至官网下载，官网地址www.kedacom.com。

三 外观及接口

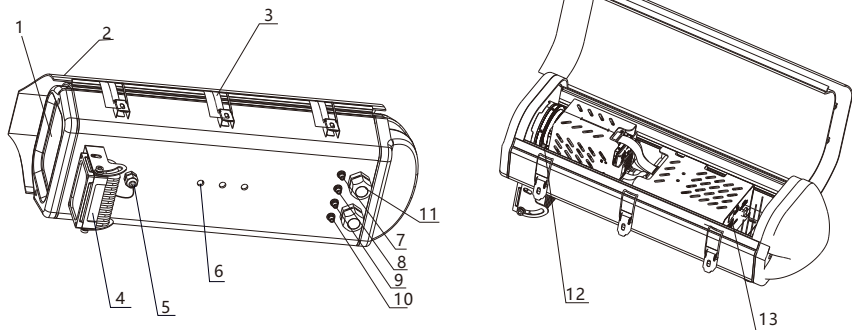
整机重量：5.5Kg

外观尺寸如下图：

单位：mm

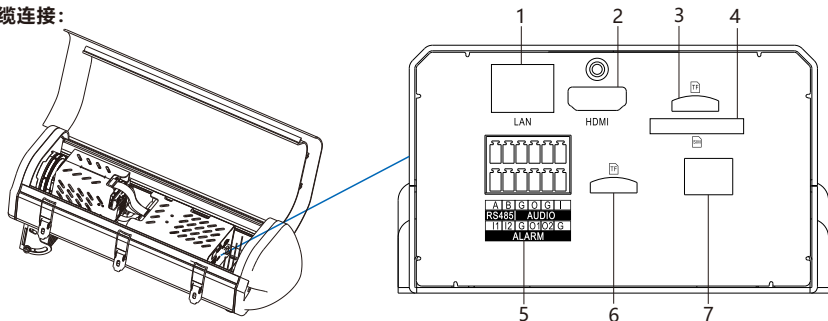


外观部件:



部件	部件名称
1	镜头视窗
2	护罩上盖
3	卡扣
4	补光灯
5	PG头 (穿补光灯尾线)
6	安装孔
7	WIFI接口
8	4G接口 (预留)
9	RFID接口 (预留)
10	GPS接口
11	PG头 (穿设备其它尾线)
12	摄像机镜头
13	尾线连接面板

线缆连接:



接口	接口名称	功能描述	接口	接口名称	功能描述
1	网络接口	连接交换机等网络接入设备	5	端子台接口	见下表
2	HDMI接口	视频输出接口（部分型号支持）	6	存储卡接口	插入TF卡
3	存储卡接口	插入TF卡	7	电源接口	AC24V电源接口
4	SIM卡接口	插入SIM卡，小卡需自备卡托（部分型号支持）			

【说明】两个TF存储卡同时插入时，只有一个生效。

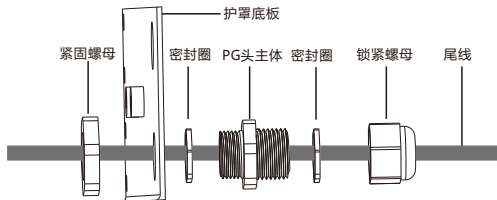
接口	接口名称	功能描述	
5	端子台接口	RS485-A	RS485接口，与外界设备交互控制，如控制第三方设备
		RS485-B	
		AUDIO-G	音频输出接地
		AUDIO-O	音频输出接口，输出音频信号
		AUDIO-G	音频输入接地
		AUDIO-I	音频输入接口，输入音频信号
		ALARM-I1	告警输入接口，输入告警信号，可连接烟感器、声控开关等
		ALARM-I2	
		ALARM-G	告警输入接地
		ALARM-O1	告警输出接口，输出告警信号，可连接报警灯等
ALARM-O2			
ALARM-G	告警输出接地		

- 【说明】** 1) ALARM-O1和ALARM-O2不分正负极，组成一路告警输出；
2) 两路告警输入（ALARM-I1和ALARM-I2）共用告警地线。

穿线

线缆连接完成后，将线缆从PG头穿出。

【说明】 穿线时，建议网线和电源线从不同的PG头穿出。



PG头拆装方法：

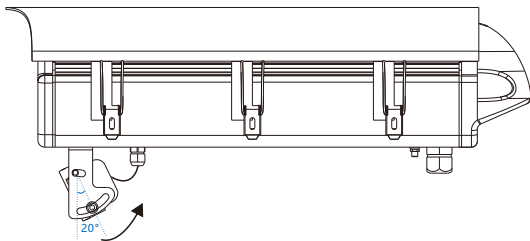
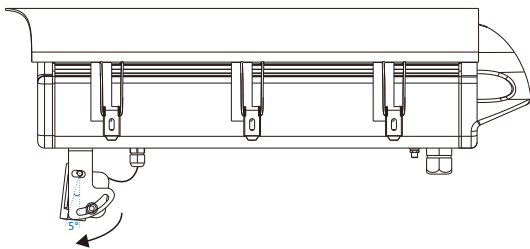
- 1) 打开护罩，一手握住PG头主体，一手卡住紧固螺母，逆时针旋转PG头主体将护罩上的PG头拆下。
 - 2) 逆时针旋转锁紧螺母将其拆下，将已经穿好金属包塑波纹的线缆依次穿入紧固螺母、PG头主体、锁紧螺母，然后顺时针拧紧锁紧螺母。
- 【说明】** 拆装过程中密封圈不要丢掉或漏装。
- 3) 将穿入线缆的PG头顺时针安装在护罩上，拧紧PG头，预留适当长度的线缆即可。
 - 4) PG头底部和金属包塑波纹接触点，用防水胶带由上而下逆时针均匀缠绕，之后再顺时针均匀缠绕，做好防水、防尘处理。
 - 5) 穿线完成后，盖好护罩上盖，以便将设备安装到支架上。

【说明】 请将3个卡扣都卡紧，以防止设备进水。

补光灯调节：

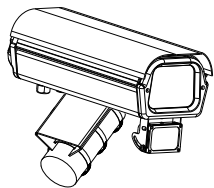
根据安装场景需要，可调节补光灯垂直角度，垂直角度向上5°、向下20°可调节。调节时可参考客户端图像效果进行。

调节时沿垂直方向上下转动补光灯即可，注意不要用力过大，以免损坏补光灯。

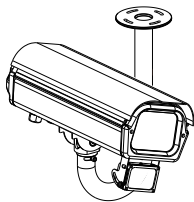


四 设备安装

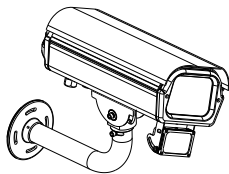
本系列摄像机支持横杆装支架、吊装支架和壁装支架安装，支架为选配件，请根据需要进行选购。安装设备之前，请盖紧护罩上盖。



横杆安装



吊装



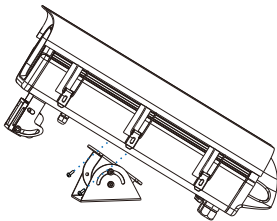
壁装

横杆安装方法

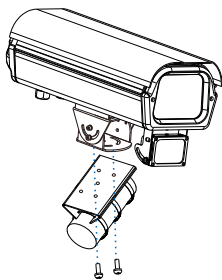
横杆安装需配合万向节进行安装，安装方法如下：



1. 拧松万向节螺钉，
调整万向节角度



2. 将万向节固定在设备底部

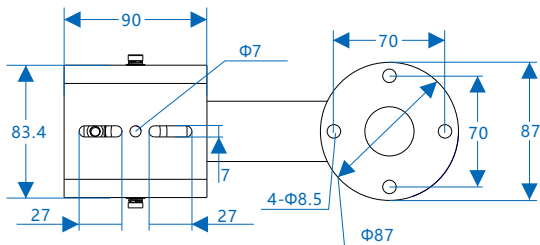
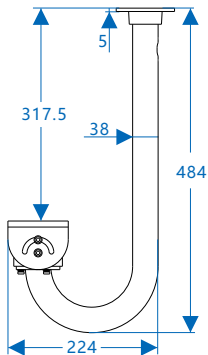


3. 将设备固定在横杆上

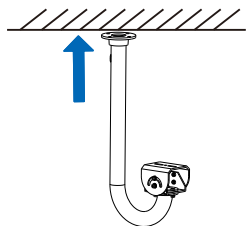
吊装安装方法

我司选配吊装支架尺寸如下：

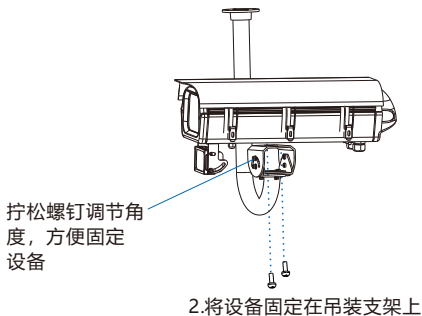
单位：mm



吊装安装方法如下：



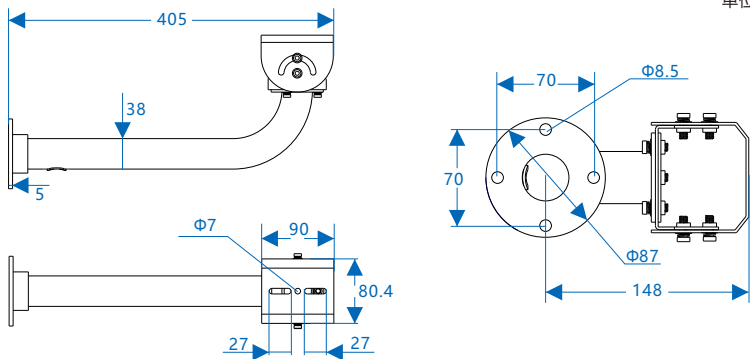
1. 将吊装支架固定在天花板上



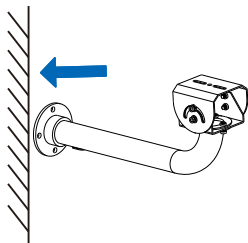
壁装安装方法

我司选配壁装支架尺寸如下：

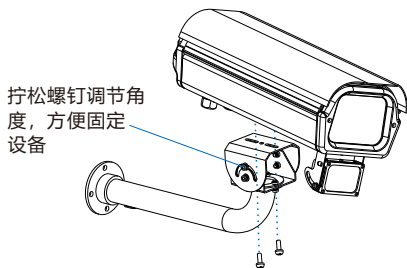
单位：mm



壁装安装方法如下：



1. 将壁装支架固定在墙面上



拧松螺钉调节角度，方便固定设备

2. 将设备固定在壁装支架上

五 登录客户端

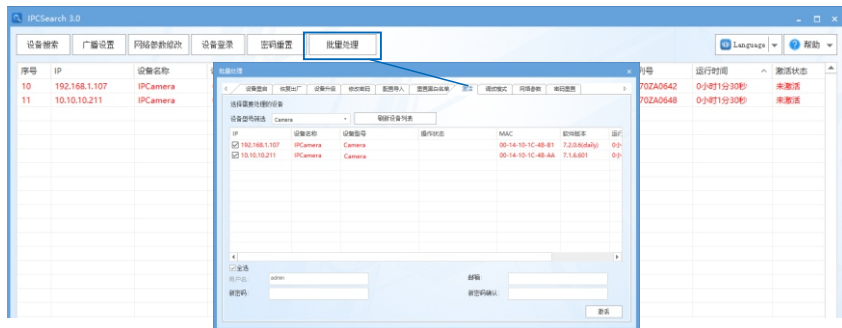
1. 最低配置和系统环境

- 处理器：3.3GHz酷睿®i3系列及以上或相同性能的其他处理器
- RAM内存：4GB及以上
- 操作系统：WindowsXP操作系统或更高版本
- 浏览器（32位）：360浏览器，IE7.0及以上版本，Firefox（51.0及以下版本），Google Chrome（41.0及以下版本）
- DirectX：9.0c

2. 设备激活

第一次使用时请运行IPCSearch，在IPCSearch中将显示设备的IP地址、网关等信息。若IPC设备所接入的网络有DHCP服务，DHCP服务器将自动给IPC分配IP地址。

- 批量激活：在IPCSearch中选中设备，点击**批量处理**，在弹出的界面中设置admin用户的密码和找回密码时需要用的邮箱，点击**激活**按钮激活设备。设备将自动重启。
- 单个激活：在IPCSearch中选择设备，单击右键，选择**设备激活**。填写用户名、密码、找回密码时需要用到的邮箱。点击**激活**按钮激活设备。设备将自动重启。
- Web客户端激活：也可以通过Web客户端激活。将PC机与设备设为同一网段，登录Web界面。可在界面设置管理员密码和密码恢复邮箱，点击**激活**。



用户名

密码

确认密码

密码恢复邮箱

管理员密码丢失后通过此邮箱找回,请确保邮箱安全、有效

3. 修改设备IP

点击**修改网络参数**，在弹出的界面中配置网络参数。静态分配IP地址时，请选择自定义地址，填写以太网参数。修改参数配置，需要填写管理员用户用户名（admin）及激活设备时所设置的密码。完成IP配置后，设备将自动重启。

4. 登录设备

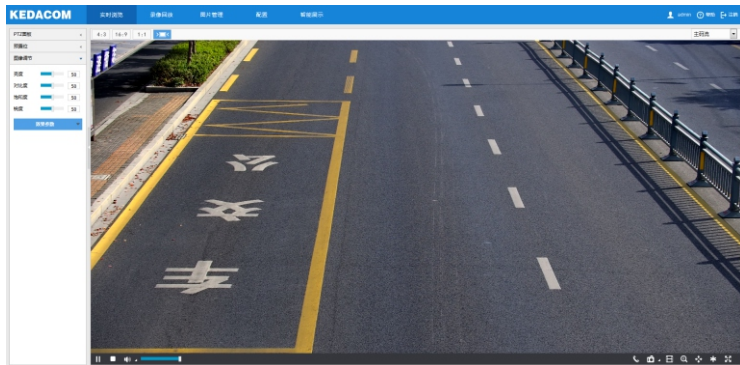
1) 在IPCSearch中双击设备或点击**登录设备**，输入用户名和密码，登录Web客户端。

登录

2) 登录成功后，下载并安装视频插件（IE内核浏览器）。

3) 进入客户端后，直接浏览图像。

【说明】不同型号，浏览界面略有差异，请以实际界面为准。更多客户端说明请参考客户端帮助文档。



4) 设备安装TF卡后，需确认TF卡是否已格式化，进入**配置>存储>存储管理**界面查看TF卡状态。如果状态显示为未格式化，需要勾选TF卡，点击**格式化**按钮进行格式化，才可正常使用。格式化过程支持分区，可用于存储录像和图片。



六 快速配置

1. 架设要求

安装时，应确保摄像机的架设符合下述要求：

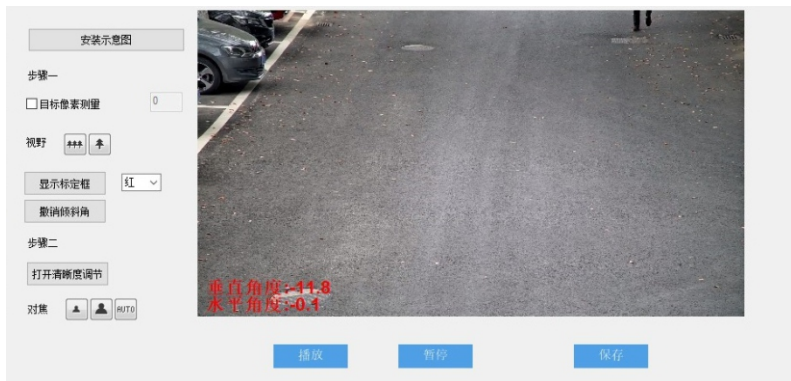
- 摄像机安装高度应为4m~7m。若架设场景中有较多公交车、卡车等大型车辆通过，建议架设高度在6m以上。
- 摄像机与车辆行驶方向的水平夹角不得大于 10° 。
- 摄像机俯仰角度应为 $10^{\circ}\sim 15^{\circ}$ ，推荐俯仰角度为 13° 。

2. 安装配置

进入**智能展示>智能配置>安装配置**界面，点击**安装示意图**，参考示意图进行安装配置，步骤如下：

- 1) 安装检查。根据实际的安装环境，并参考架设参数表（详见附录A），选择适宜的安装高度安装摄像机。安装完成后，点击**显示倾斜角**，可查看当前摄像机的垂直和水平角度，将摄像机调整至合适的倾斜角度。

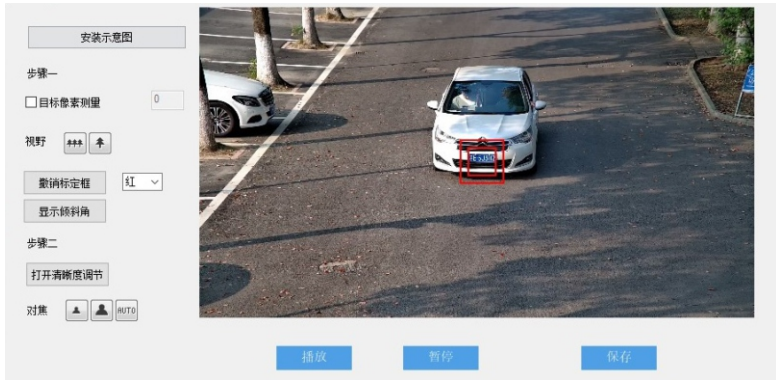
【注意】安装时，可适当调整摄像机的安装高度和角度，以确保摄像机视野中心对准重点抓拍区域。摄像机不得倾斜，需确保画面中人员姿态端正。



2) 视野调节。可采用两种方式调节视野，标定框调节和像素调节。调节完成后，点击**保存**，使设置生效。

标定框调节：

- 进入**智能展示>智能配置>安装配置**界面，选择标定框颜色，点击**显示标定框**，在画面中出现所选颜色的标定框；
- 将50cm×50cm的标定纸板（或车牌）置于画面中央，正对镜头；
- 点击**拉远**或**拉近**按钮，调节视野，改变标定纸板（或车牌）在画面中的大小；标定纸板与较小的标定框重合时，即为最大监控场景；标定纸板与较大标定框重合时，即为最小监控场景。



像素调节：

- 进入**智能展示>智能配置>安装配置**界面，勾选**目标像素测量**，可显示画面中人员的瞳孔间距或车辆的车牌宽度；
- 使人员或车辆处于画面中央；
- 点击**拉远**或**拉近**按钮，调节视野，改变人脸或车牌在画面中的大小，确保瞳孔间距、车牌宽度不低于规定的最小值即可。

	200W	400W	800W
车牌宽度 (像素)	>100	>120	>200
瞳孔间距 (像素)	>20	>25	>40

安装示意图

步骤一

目标像素测量

视野


显示标定框

显示倾斜角

步骤二

打开清晰度调节

对焦



播放
暂停
保存

安装示意图

步骤一

目标像素测量

视野


显示标定框

显示倾斜角

步骤二

打开清晰度调节

对焦



播放
暂停
保存

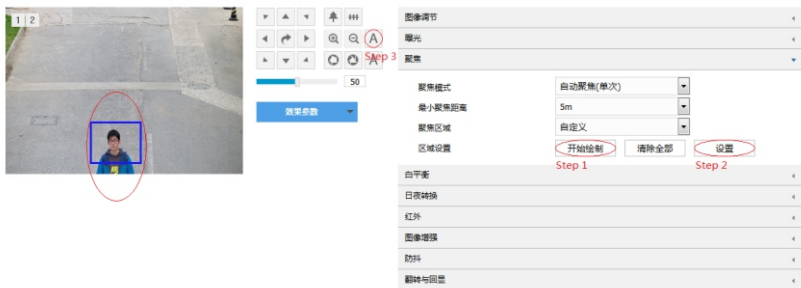
3) 对焦。摄像机默认为自动聚焦模式，当且仅当自动聚焦无法获得清晰的图像时，才需进行手动对焦。

- a) 点击**打开清晰度调节**，画面出现一个红色框，框内显示清晰度系数，该系数越大，清晰度越高；
- b) 点击**聚远、聚近或自动聚焦**按钮使镜头对焦，清晰度系数随之变化，清晰度系数最大时表明达到最佳对焦位置。

【说明】分辨率大于200W像素的摄像机，需手动绘制聚焦区域。可在预绘制区域中布置人员或放置纹理丰富的物体，以提高对焦精度。

- 1) 进入**配置>摄像机>图像>聚焦**，点击**开始绘制**，在画面底部位置绘制重点聚焦区域，绘制完成后，点击**停止绘制**；
- 2) 再点击**设置**，进行自动聚焦；
- 3) 完成后，在聚焦模式中选择**镜头锁定**，锁定当前配置。

图像效果



- 【注意】**
- 1) 清晰度显示功能仅在编码格式为H.264或H.265时有效。
 - 2) 配置过程中，建议用一个纹理丰富的物品做标定纸板，如报纸等。
 - 3) 安装配置完成后，点击**保存**，设置才能生效，同时锁定摄像机的焦距。若在其他界面调节焦距，5分钟之后摄像机自动恢复到锁定状态。
 - 4) 镜头参数调试完成后，避免误操作，可对镜头进行锁定，进入**配置>摄像机>图像>聚焦>聚焦模式**界面，下拉菜单选择镜头锁定，锁定状态，镜头参数不可调节，如需重新调试，可在下拉菜单中选择其他模式，比如自动聚焦（单次），解除锁定。

3. 标定配置

摄像机安装配置完成后，才可进行标定配置。若摄像机的高度、俯仰角、焦距等参数发生变化，需重新进行标定配置。

1) 标定。摄像机主要用于抓拍车辆时，需参照车牌进行标定。

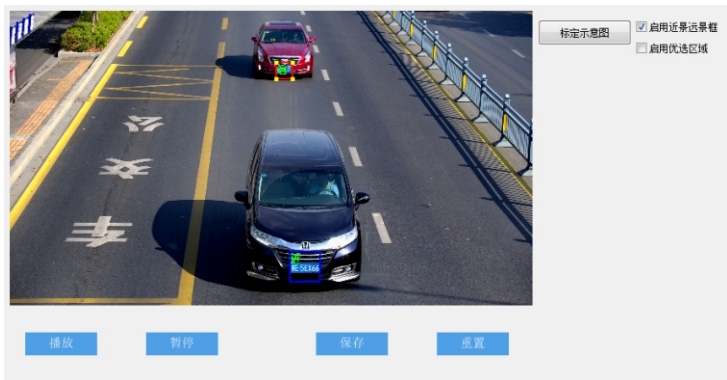
a) 进入**智能展示>智能配置>标定配置**界面，勾选**启用远景取景框**。当车辆的车牌处于画面中央时，点击**暂停**，调整远景框的大小和位置，使远景框与车牌宽度相同；

【说明】点击选中框体，拖动框体四角的黄色端点，可调整相应框体的长和宽；长按边框，拖动相应框体，可将其调整到合适的位置。

b) 点击**播放**，当车辆的车牌靠近监控画面的下沿时，点击**暂停**，调整远景框的大小和位置，使远景框与车牌宽度相同。

【注意】1) 标定过程中，不可进行视野调节，即不可使用拉近、拉远按钮。

2) 安装配置完成后，点击**保存**，设置才能生效，同时锁定摄像机的焦距。若在其他界面调节焦距，5分钟之后摄像机自动恢复到锁定状态。



- 2) 优选区域配置。未启用优选区域时，摄像机默认全画面选优；启用后，当目标经过设置的优选区域后，摄像机将优先输出该区域内抓拍的最佳快照。

【说明】1) 优选区域配置适用于人脸和机动车抓拍。

2) IPC1X6-Xi8N型号的摄像机不支持人脸抓拍。

实际场景中，尤其是夜晚补光灯仅能覆盖部分区域的情况下，需进行优选区域配置，步骤如下：

- 进入**智能展示>智能配置>标定配置**界面，勾选**启用优选区域**，显示优选区域，默认为画面从上至下1/2~3/4处。
- 点击优选区域框，拖动框体四角的黄色端点，可调整优选区域的长和宽；长按蓝色边框，拖动优选区域框体，可将其调整到合适的位置。



- 3) 点击**保存**，参数设置即可生效。

附录A：架设参数表

以下为摄像机按推荐俯仰角度架设，即俯仰角为13°时的架设参考数据。

【说明】最佳监控距离，指监控画面中下部与摄像机的水平距离。

200W像素			
架设高度	架设俯仰角	最佳监控距离	监控宽度
4m	13°	8~11m	5m
5m	13°	12~15m	5m
6m	13°	16~19m	5m
7m	13°	20~23m	5m
400W像素			
架设高度	架设俯仰角	最佳监控距离	监控宽度
4m	13°	7~11m	6m
5m	13°	11~15m	6m
6m	13°	15~19m	6m
7m	13°	18.5~23.5m	6m
800W像素			
架设高度	架设俯仰角	最佳监控距离	监控宽度
4m	13°	7~12m	7m
5m	13°	11~16m	7m
6m	13°	15~20m	7m
7m	13°	19~24m	7m

附录B: AC 24V线径与传输距离关系表

当线径大小一定, AC 24V电压损耗率低于10%时, 不同传输功率推荐的最大传输距离。(对于AC 24V交流供电设备, 其最大允许电压损耗率为10%。下面表格中所用线缆均为铜线, 铜的电阻率为 $\rho = 0.0175\Omega \cdot \text{mm}^2/\text{m}$)

距离m (feet) 功率W \ 线径 mm	0.8 (20AWG)	1.0(18AWG)	1.25(16AWG)	2.0(12AWG)
5	122 (401)	194 (636)	307 (1008)	781 (2562)
10	61 (201)	97 (318)	154 (504)	391 (1281)
15	41 (134)	65 (212)	102 (336)	260 (854)
20	31 (100)	48 (159)	77 (252)	195 (641)
25	24 (80)	39 (127)	61 (202)	156 (512)
30	20 (67)	32 (106)	51 (168)	130 (427)
35	17 (57)	28 (91)	44 (144)	112 (366)
40	15 (50)	24 (79)	38 (126)	98 (320)
45	14 (45)	22 (71)	34 (112)	87 (285)
50	12 (40)	19 (64)	31 (101)	78 (256)
55	11 (36)	18 (58)	28 (92)	71 (233)
60	10 (33)	16 (53)	26 (84)	65 (214)
65	9 (31)	15 (49)	24 (78)	60 (197)
70	9 (29)	14 (45)	22 (72)	56 (183)
75	8 (27)	13 (42)	20 (67)	52 (171)
80	8 (25)	12 (40)	19 (63)	49 (160)
85	7 (23)	11 (37)	18 (59)	46 (151)
90	7 (22)	11 (35)	17 (56)	43 (142)
95	6 (21)	10 (33)	16 (53)	41 (135)
100	6 (20)	10 (32)	15 (50)	39 (128)

【备注】 线径要求适用于单根、实心、圆形的铜线, 多股绞线的电缆AWG 值是由所有线的总横截面积决定。

保修说明

本保修卡适用于您购买的本公司系列产品。

1. 免费保修期一年（仅限中国大陆地区，中国大陆以外地区请参考英文说明）。
2. 凡保修期内，由于本产品自身引起的故障，请与公司售后服务部联系。
3. 保修时我们将使用您的保修卡信息，请认真填写。
4. 以下情况，属于有偿保修范围：
 - 人为原因造成的设备故障
 - 因使用环境不符合本产品要求造成的故障
 - 因不可抗力造成的产品损坏
 - 无保修卡
 - 已过免费保修期

用户信息

用户名称：

详细地址：

传真：

电话：

邮箱：

邮编：

产品名称：

产品型号：

购买日期：

I Preface

Thank you for purchasing our product. If there are any questions, or requests, please do not hesitate to contact us.

The intention of writing this Guide is to ensure that user can use the product correctly to avoid danger or property loss. Please read this Guide carefully before using, and keep it properly for future reference. If the product cannot work normally or is damaged because the user does not follow the safety instructions, we shall not assume any responsibility. Your cooperation will be highly appreciated.

II Safety Instruction

1. Power Supply

- During installing and using the device, please follow local electrical safety regulations strictly.
- Please use power supply in the safe voltage range of our product. Make sure the power supply is correct before running the device.
- Please install an easy-to-use breaker during installation and wiring in case it is necessary to make an emergency break.
- Please prevent the power cord from being trampled or pressed especially the plug, socket and the connecting part led out from the device.
- Please connect cables of power, alarm, audio and RS-485 with the power off. Hot-line wiring is not allowed.

2. Working Environment

- Do not focus the camera lens on strong light such as the sun or incandescent lamp; otherwise the strong light will cause overexposure or light leak (not camera malfunction), which may shorten camera lifetime.
- Please transport, use and store the device within defined humidity and temperature ranges.
- Do not expose it in damp, dusty, extremely hot or cold places or places with intense electromagnetic radiation or with unstable lighting.
- Keep the camera away from water or any liquid to avoid damage to internal components.
- To avoid heat accumulation, please do not block the ventilation around the device.
- While shipping the camera, pack it in the factory packing or use materials with equivalent quality.
- When shipping, storing and installing the device, try to prevent it from damages caused by pressure, violent vibration and soaking.

Operating Environment	
Voltage	AC 24V±10%
Power Consumption	35W Max (the max of fill light is 24W)
Temperature	-40°C ~ +70°C
Humidity	10%~95% (non-condensing)
Altitude	-60m~3000m
Pressure	86kPa~106kPa

3. Daily Maintenance

- Do not touch the heat component of the device directly to avoid empyrosis.
- When the lens is contaminated by dust or grease, use cotton cloth or lens clean cloth to wipe it off. When it is hard to clean, dip some lens cleanser and wipe gently and rotate outward from the middle until it is clean. Never apply any organic solvent with ethanol or benzene to clean the lens and housing.
- Do not disassemble or repair the device in any way by yourself. We shall not assume any responsibility for problems caused by unauthorized repair or maintenance.
- If the product does not work properly, please contact your dealer or the nearest service center.

4. Special Statement

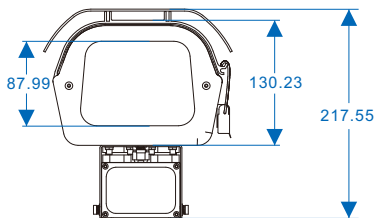
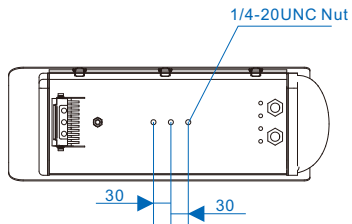
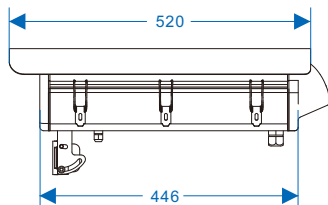
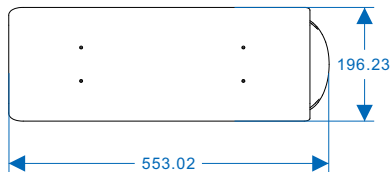
- The product appearance is subject to the actual device. Pictures in this Guide are for your reference only.
- Every effort has been made to ensure the accuracy and validity of this Guide. Any update of this Guide caused by version upgrade is subject to change without notice.
- This Guide is made for multiple models but it will not illustrate all models one by one. Please refer to it according to the actual products you are using.
- This device can be used after being activated through IPCSearch. During activation please fill a valid email address for finding back the password. You can download IPCSearch from our website, address: <https://www.kedacom.com/cn/softtools/index.jhtml>
- For safety's concern, it is strongly recommended that you set a strong password which is composed of at least 2 kinds of the following, digits, case-sensitive letters or specific symbols, and whose length ranges from 8 to 16 bits. Please modify the password periodically and once every 3 months is recommended. If the device is used in highly risky environment, suggest modifying the password monthly or weekly. Please keep your user name and password safe.
- You should be responsible for all risks of accessing the camera to the Internet, including but not limited to possible cyber-attack, hacking attack, virus infection and etc. This company is not responsible for product failures and information disclosure caused thereby, but will provide timely technical support for the camera.
- For the latest files, please download from our website www.kedacom.com.

III Appearance and Interface

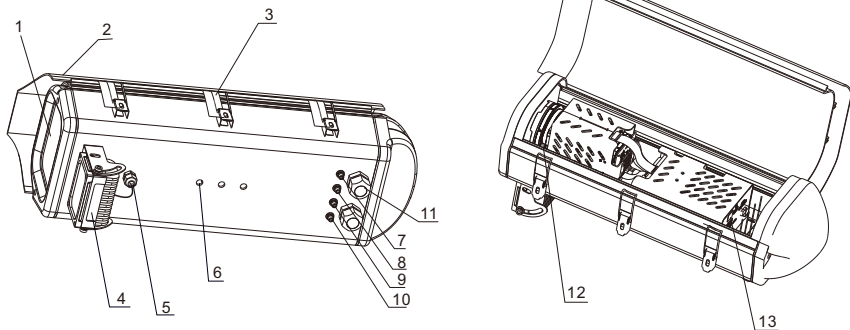
Total weight: 5.5 KG

Dimensions:

Unit: mm

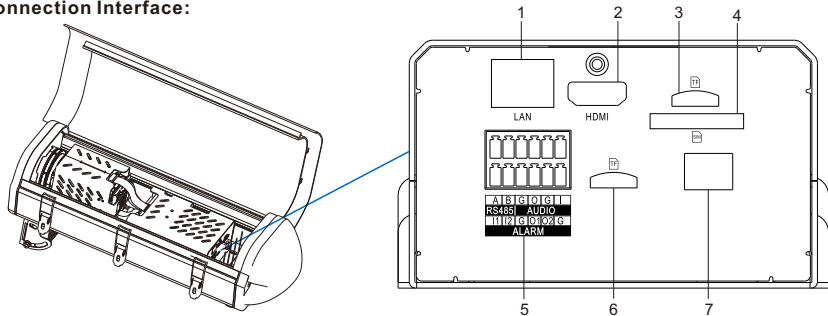


Components



No.	Name
1	Lens View Window
2	Upper Cover of Housing
3	Snap-Joint
4	Fill Light
5	PG Head (to thread the buttcock line of fill light)
6	Mounting Hole
7	WiFi Interface
8	4G Port (reserved)
9	RFID Interface (reserved)
10	GPS Interface
11	PG Head (to thread other buttcock lines)
12	Camera Lens
13	Connection Panel of Buttcock Lines

Connection Interface:



No.	Name	Function	No.	Name	Function
1	Network Port	Connect to a switch and etc.	5	Terminal Interface	In following table
2	HDMI Port	Video output port (some models)	6	TF Card Port	Insert a TF card
3	TF Card Port	Insert a TF card	7	Power Port	AC24V port
4	SIM Card Port	Insert a SIM card, prepare a card tray separately for small card (some models)			

[Note] When the two TF card slots are inserted simultaneously, only one of them is valid.

No.	Name	Function	
5	Terminal Interface	RS485-A	RS-485 serial port to control peripheral devices such as third-party device
		RS485-B	
		AUDIO-G	Audio output grounding
		AUDIO-O	Audio output port for outputting audio signal
		AUDIO-G	Audio input grounding
		AUDIO-I	Audio input port for inputting audio signal
		ALARM-I1	Alarm input port for inputting alarm signal, connect to smoke detector and voice-activated switch
		ALARM-I2	
		ALARM-G	Alarm input grounding
		ALARM-O1	Alarm output port for outputting alarm signal, connect to alarm light
ALARM-O2			
ALARM-G	Alarm output grounding		

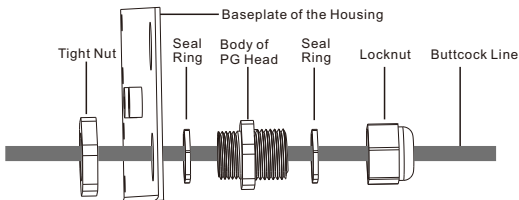
[Note]:

- 1) ALARM-O1 and ALARM-O2 are regardless of positive and negative polarities and they form a group of alarm output.
- 2) The ALARM-I1 and ALARM-I2 wires share the alarm grounding wire.

Thread Wires

After finish wire connection, thread wires out from the PG head.

[Note] When threading wires, suggest threading the network cable and the power cord out from different PG heads.



Disassembling and Assembling of PG Head:

- 1) Open the housing, hold the body of PG head with one hand and steady the tight nut with another hand. Rotate the body of PG head anti-clockwise and take it down from the housing.
- 2) Rotate the locknut anti-clockwise and take it down. Thread the wires that have threaded through the metal-covered corrugated cable through the tight nut, the body of PG head and the locknut in order, and then tighten the locknut clockwise.

[Note] During disassembling and assembling, do not discard the seal ring and make sure it is in.

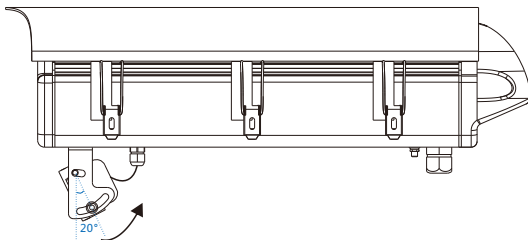
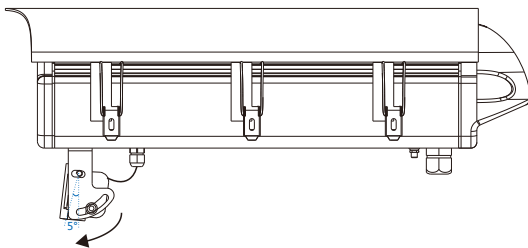
- 3) Install the PG head that has threaded through the wires onto the housing and make it tight with certain length of wires reserved.
- 4) For the connecting point at the bottom of the PG head with the metal-covered corrugated cable, bind it evenly anti-clockwise from top to bottom with waterproof adhesive tape, and then bind it evenly clockwise. Make good waterproof and dustproof treatment to it.
- 5) After finish threading wires, cover the upper cover of the housing so as to mount it onto the bracket.

[Note] Please lock the 3 snap-joints tight to prevent water in.

Adjust Fill Light:

Adjust the vertical angle of the fill light according to the installation scenes, 5° upward and 20° downward adjustable in vertical direction. Angle adjustment could be performed while viewing the image on the web client.

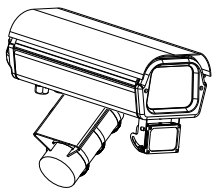
During adjustment, rotate the fill light in vertical direction but do not pull it forcefully, otherwise it may be damaged.



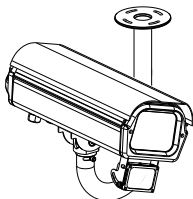
IV Installation

The camera supports cross-bar mount, pendent bracket mount and wall bracket mount, the brackets of which are all optional. Please purchase separately if necessary.

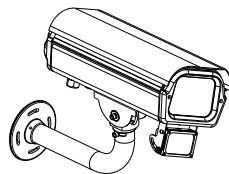
Before installing the device, please cover the upper cover of the housing tight.



Cross-Bar Mount



Pendent Bracket Mount



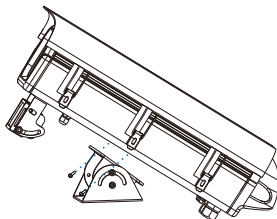
Wall Bracket Mount

Cross-Bar Mount

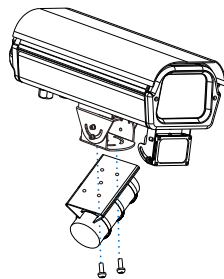
Cross-bar mount needs a cardan joint, the steps of which are as follows:



- 1 Loosen the screws on the cardan joint to adjust its direction



- 2 Fix the cardan joint onto the baseplate at the bottom of the device

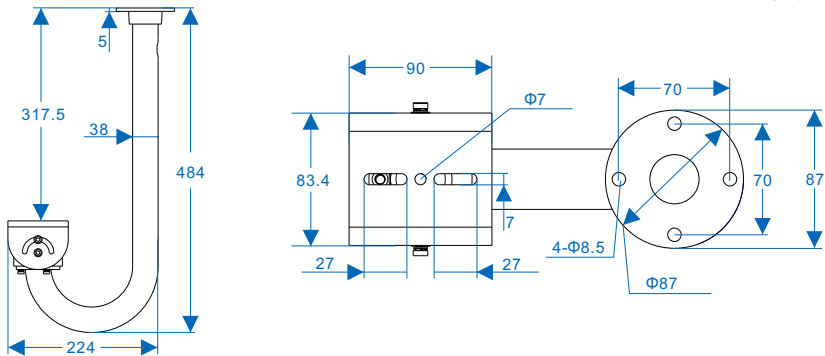


- 3 Fix the device onto the cross-bar

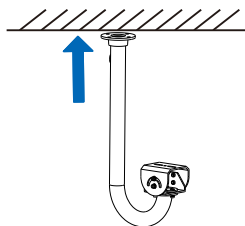
Pendent Bracket Mount

Dimensions of the optional pendent bracket of this company:

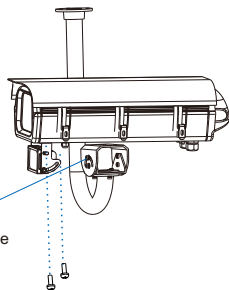
Unit: mm



The steps of pendent bracket mount:



- 1 Fix the pendent bracket on the ceiling

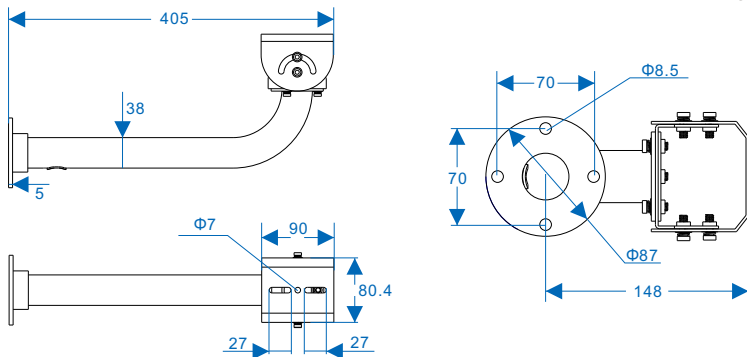


- 2 Fix the device onto the pendent bracket

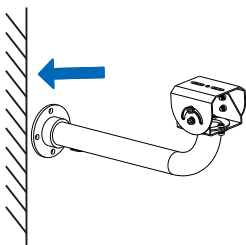
Wall Bracket Mount

Dimensions of the optional wall bracket of this company:

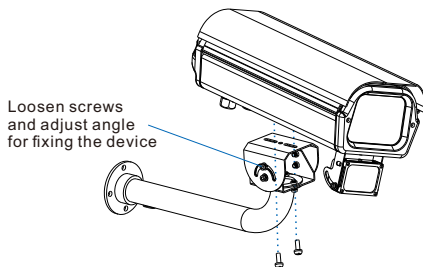
Unit: mm



The steps of wall bracket mount:



- 1 Fix the wall bracket on the wall



- 2 Fix the device onto the wall bracket

V Login to Web Client

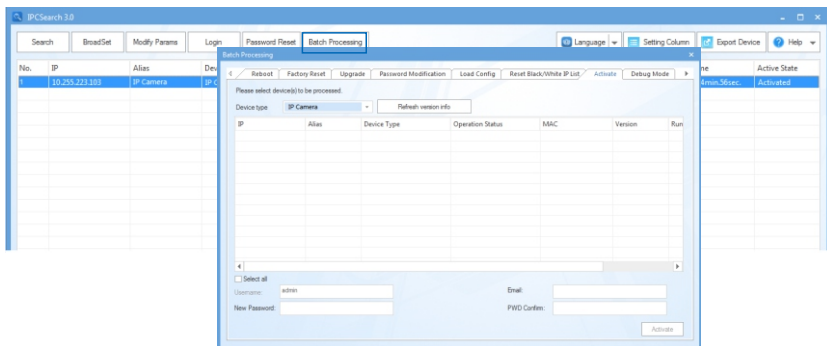
1. Minimum System Configurations and Requirements

- Processor: 3.3 GHz CORE®i3 series or other equivalent processors
- RAM Memory: 4GB or above
- Operating System: Windows XP or newer version
- Browser (32 bits): 360 browser, IE7.0 or newer, Firefox (51.0 and lower versions), Google Chrome (41.0 and lower versions)
- DirectX : 9.0c

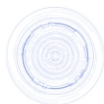
2. Device Activation

When using the device for the first time, IPCSearch will display the device IP address, gateway and etc. If the network provides DHCP service, DHCP server will assign IP for the camera automatically.

- Batch: Select the device and click "**Batch processing**". In the popup interface, set admin user's password and the email address to find back the password. Click "**Activate**" and wait for rebooting.
- Individual: Select the device from IPCSearch and right click to select "**Activate**". Fill admin user name and password and the e-mail address to find back the password. Click "**Activate**" and wait for rebooting.
- Web client: the device can also be activated through the web client. Set PC and the device in the same network segment and login to the web. User can set admin password and password reset email on the interface and click "**Activate**".



Login



admin

admin

Weak Strong

Please choose a password with 8-16 characters. Your password must also contain two or more combinations of upper and lowercase letters, numbers, and symbols.

admin

admin

When admin's password gets lost, find it back through this email. Make sure this email address is safe and valid.

Active

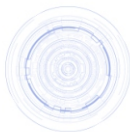
3. Modify Device IP Address

Click **"Modify Params"** and set the network parameters. When configuring a static IP for the camera, please check **"Custom device address (Close DHCP)"** and fill the Ethernet parameter. During the modification, the user name (admin) and the password set before activation should be entered. After configuration, the camera will reboot automatically.

4. Login to the Device

- 1) Double click the device in IPCSearch or click **"Login"**. Enter user name and password to login the web client.

Login



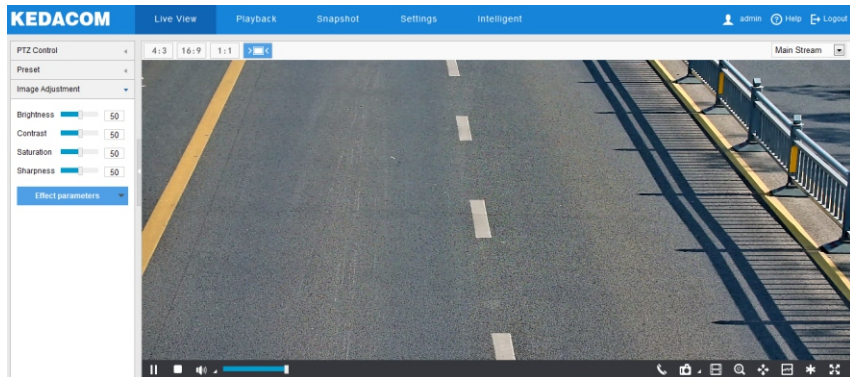
admin

admin

Login

- 2) After login, download and install the plug-in (IE Kernal browser).
- 3) Re-login to the web client and view live video directly.

[Note]: Interface of different models may differ. Please subject to the actual product. Please refer to the *Help* file for detailed explanation.



- 4) After installing the TF card, you need to confirm if the TF card has been formatted. Go to **Settings > Storage > Storage Management** to view TF card status. If it is unformatted, select the TF card and click "**Formatting**" to format it and it will work normally. The formatting supports partitioning to store videos and pictures.

Storage Management

Disk Full Strategy:

Storage Device List Formatting

Disk ID	Capacity	Remaining Space	Status	Type	Attribute	Progress
<input type="checkbox"/> 1	0M	0M	Does not Exist	Local External	Read-write	

Snapshot

Event	Scheduled	Alarming
Local storage	<input checked="" type="checkbox"/>	<input checked="" type="checkbox"/>
FTP	<input type="checkbox"/>	<input type="checkbox"/>

Save

VI Quick Settings

1. Installation Requirements

Before installation, make sure the installation of camera meets the following requirements:

- The installation height of the camera should be in the range of 4 m to 7 m. If there are many buses and trucks passing through in the scene, recommend installing the camera over 6 m.
- The horizontal angle between the camera and the vehicle direction should not be larger than 10° .
- The camera angle of pitch should be in the range of 10° to 15° , and 13° is recommended.

2. Installation Configuration

Go to **Intelligent > Settings > Install**. Click “**Installation Diagram**” and configure according to the diagram, steps as follows:

- 1) Installation examination. Select proper installation height for the camera according to the actual environment and Appendix A: Reference of Installation Parameters. After finish installation, click “**Show Angle**” to show the horizontal and vertical angles of the camera. Adjust the camera to proper angles.

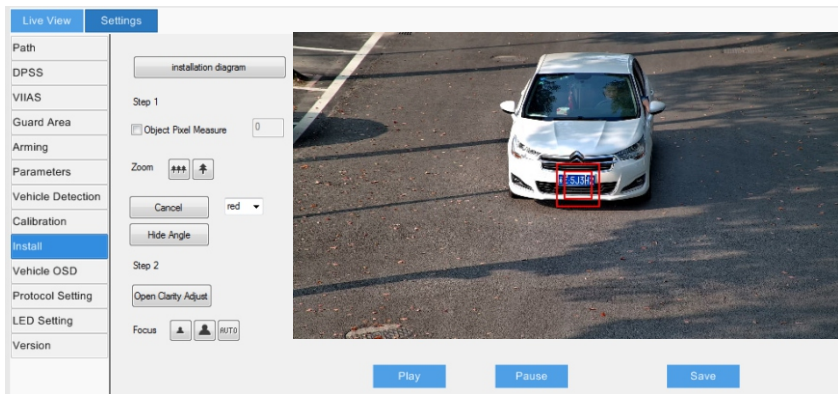
[Attention] During installation, you can adjust camera installation height and angles properly to make sure the camera lens is facing rightly to the key surveillance area. The camera cannot be slanted so as to make sure the person in the picture stands upright.

The screenshot displays the 'Install' configuration interface. On the left is a sidebar menu with 'Install' selected. The main panel contains an 'installation diagram' button, 'Step 1' with 'Object Pixel Measure' (checkbox) and 'Zoom' (controls), 'Calibration Frame' (dropdown set to 'red'), 'Hide Angle' button, 'Step 2' with 'Open Clarity Adjust' button, and 'Focus' (controls). A video feed shows a road scene with red text overlay: 'Vertical angle: -11.9' and 'Horizontal angle: 1.6'. At the bottom are 'Play', 'Pause', and 'Save' buttons.

- 2) Adjust camera field of view. There are 2 methods, calibration frame adjustment and pixel adjustment. After finishing adjustment, click **"Save"** to validate settings.

Calibration frame adjustment:

- Go to **Intelligent > Settings > Install**, select calibration frame color and click "Calibration Frame" to show the calibration frame in the selected color;
- Put the calibration board (or vehicle plate) sized 50 cm * 50 cm in the center of the image facing the lens;
- Click icons of **"Zoom in"** or **"Zoom out"** to adjust the field of view and change the size of the calibration board (or vehicle plate) in the image; when the calibration board coincides with the smaller frame, it is the maximum scene; when the calibration board coincides with the larger frame, it is the minimum scene.



Pixel adjustment:

- Go to **Intelligent > Settings > Install**, select **"Object Pixel Measure"** to show the interpupillary distance (IPD) of the person or show the width of the vehicle plate in the image;
- Make the person or the vehicle in the center of the image;
- Click icons of **"Zoom in"** or **"Zoom out"** to adjust the field of view and change the size of human face or vehicle plate to ensure the IPD or the plate width is no less than the specified minimum value.

	2.0 MP	4.0 MP	8.0 MP
Plate Width (pixel)	> 100	> 120	> 200
IPD (pixel)	> 20	> 25	> 40

Live View Settings

Path

DPSS

VIAS

Guard Area

Arming

Parameters

Vehicle Detection

Calibration

Install

Vehicle OSD

Protocol Setting

LED Setting

Version

installation diagram

Step 1

Object Pixel Measure 142

Zoom


Calibration Frame red ▾

Show Angle

Step 2

Open Clarity Adjust

Focus (RTN)



Play Pause Save

installation diagram

Step 1

Object Pixel Measure 41

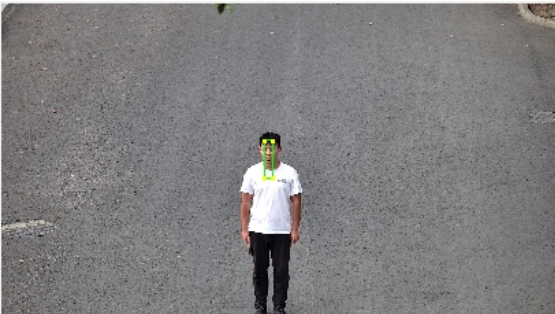
Show Angle

Zoom

Step 2

Open Clarity Adjust

Focus (RTN)

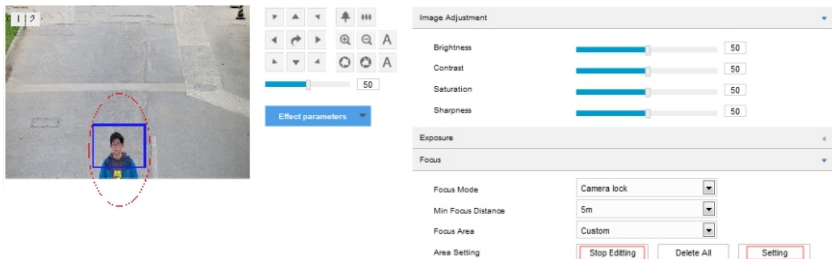


Play Pause Save

- 3) Focusing. The default focus mode of the camera is auto. Only when auto focusing cannot obtain clear images should user focus manually.
 - a) Click **"Open Clarity Adjust"** and a red frame will display in the picture, showing the clarity coefficient. The larger the coefficient is, the higher the clarity will be.
 - b) Click icons of **"Focus far"**, **"Focus near"** and **"Auto focus"** to make the lens focus and the clarity coefficient will change accordingly. When the coefficient comes to the max, it means the camera has reached the best focus position.

[Note]: When the camera resolution is above 2.0 MP, you need to edit the focus area manually. You can arrange a person or put a richly-textured object in the edit area so as to improve focus accuracy.

- 1) Go to **Settings > Camera > Image > Focus**, and click **"Edit"** to edit key focusing area at the bottom of the image. After finish editing, click **"Stop Editing"**.
- 2) Click **"Setting"** to focus automatically.
- 3) Select **"Camera Lock"** from the dropdown list of "Focus Mode" to lock current settings.



[Attention]:

- 1) The clarity display function is available when the encoding format is H.264 or H.265.
- 2) When adjusting image clarity, suggest using a richly-textured object as the adjustment board, such as newspaper.
- 3) After finishing installation configuration, click **"Save"** to validate settings and meanwhile lock the camera focal length. If you configure the camera focal length on other interfaces, the camera will restore to locking status automatically in 5 minutes.
- 4) After finishing lens adjustment, to avoid misoperation, lock the lens parameters by going to **Settings > Camera > Image > Focus > Focus Mode** and select "Camera Lock" from the dropdown list. If you want to re-adjust the lens, select another mode from the dropdown list to unlock lens parameters.

3. Calibration

After finishing installation and configuration of the camera, perform calibration settings. If the camera height, angle of pitch or focal length changes, user needs to calibrate again.

1) Calibrate. When the camera is used to capture vehicle plates, calibrate by referring to the vehicle plate.

- a) Go to **Intelligent > Settings > Calibration**, and select **"Enable NearFarBoxFlag"**. When the vehicle plate is in the center of the image, click **"Pause"**. Adjust the size and position of the "Far" box to make it the same width as that of the plate;

[Note] Click to select the box and drag the 4 yellow points at the corners to adjust the length and width of it; long-press on the box to select it and drag it to proper positions.

- b) Click **"Play"** and when the vehicle plate comes to the bottom of the image, click **"Pause"**. Adjust the size and position of the "Near" box to make it the same width as that of the plate;

[Attention]

- 1) During calibration, do not adjust the field of view, i.e. do not click the zoom in or zoom out icons.
- 2) After finishing installation configuration, click **"Save"** to validate settings and meanwhile lock the camera focal length. If you configure the camera focal length on other interfaces, the camera will restore to locking status automatically in 5 minutes.

Live View Settings

Path
DPSS
VIIAS
Guard Area
Arming
Parameters
Vehicle Detection
Calibration
Install
Vehicle OSD
Protocol Setting
LED Setting
Version

Calibration diagram Enable NearFarBoxFlag
 Enable PriorAreaFlag

Play Pause Save Reset

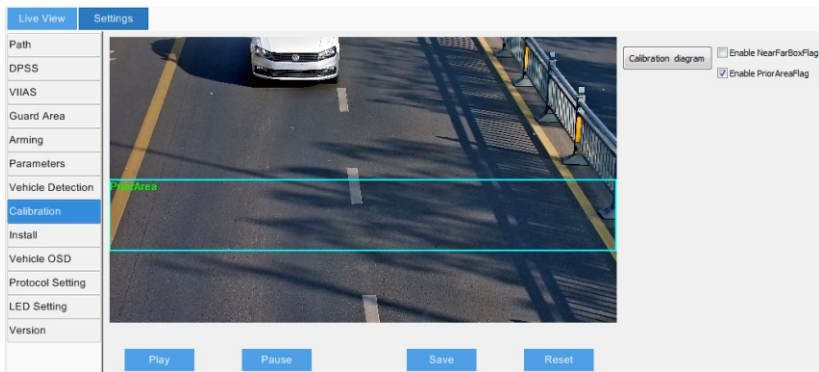
- 2) Configure prior area. When "Enable Prior Area Flag" is unselected, the default prior area of the camera is full area; after selecting "Enable Prior Area Flag", when an object enters the prior area, the camera will output the optimum snapshots in this area first.

[Note] 1) Prior area configuration is used to capture human face and vehicles.

2) The model IPC1X6-Xi8N does not support capturing human faces.

In actual scenes, especially when the supplementary light at night can only cover partial area, prior area configuration is necessary. The configuration steps are as follows:

- Go to **Intelligent > Settings > Calibration**, and select **"Enable Prior Area Flag"** to display the prior area. The default prior area is 1/2 to 3/4 part from the top of the image.
- Click the prior area frame and drag the yellow points at the corners to adjust the length and width of the area; long-press on the blue lines of the frame and drag the frame to move it to a proper position.
- Click **"Save"** to validate settings.



Appendix A: Reference of Installation Parameters

The following table is the reference parameters when installing the camera at the recommended angle of pitch, i.e. 13°.

[Note] Optimum surveillance distance means the horizontal distance between the lower middle part of the image and the camera.

2.0 MP			
Installation Height	Angle of Pitch	Optimum Surveillance Distance	Surveillance Width
4m	13°	8~11m	5m
5m	13°	12~15m	5m
6m	13°	16~19m	5m
7m	13°	20~23m	5m
4.0 MP			
Installation Height	Angle of Pitch	Optimum Surveillance Distance	Surveillance Width
4m	13°	7~11m	6m
5m	13°	11~15m	6m
6m	13°	15~19m	6m
7m	13°	18.5~23.5m	6m
8.0 MP			
Installation Height	Angle of Pitch	Optimum Surveillance Distance	Surveillance Width
4m	13°	7~12m	7m
5m	13°	11~16m	7m
6m	13°	15~20m	7m
7m	13°	19~24m	7m

Appendix B: AC24V Wire Diameter VS. Transmission Distance

The recommended max transmission distance when the wire diameter is certain and the AC24V voltage loss rate is less than 10%

(For AC24V powered devices, the maximum allowed voltage loss rate is 10%. All the wires in the following table are cooper wires, whose electrical resistivity is $\rho = 0.0175\Omega \cdot \text{mm}^2/\text{m}$)

Distance m (feet) Power W	Diameter mm	0.8 (20AWG)	1.0(18AWG)	1.25(16AWG)	2.0(12AWG)
5		122 (401)	194 (636)	307 (1008)	781 (2562)
10		61 (201)	97 (318)	154 (504)	391 (1281)
15		41 (134)	65 (212)	102 (336)	260 (854)
20		31 (100)	48 (159)	77 (252)	195 (641)
25		24 (80)	39 (127)	61 (202)	156 (512)
30		20 (67)	32 (106)	51 (168)	130 (427)
35		17 (57)	28 (91)	44 (144)	112 (366)
40		15 (50)	24 (79)	38 (126)	98 (320)
45		14 (45)	22 (71)	34 (112)	87 (285)
50		12 (40)	19 (64)	31 (101)	78 (256)
55		11 (36)	18 (58)	28 (92)	71 (233)
60		10 (33)	16 (53)	26 (84)	65 (214)
65		9 (31)	15 (49)	24 (78)	60 (197)
70		9 (29)	14 (45)	22 (72)	56 (183)
75		8 (27)	13 (42)	20 (67)	52 (171)
80		8 (25)	12 (40)	19 (63)	49 (160)
85		7 (23)	11 (37)	18 (59)	46 (151)
90		7 (22)	11 (35)	17 (56)	43 (142)
95		6 (21)	10 (33)	16 (53)	41 (135)
100		6 (20)	10 (32)	15 (50)	39 (128)

[Note]:

The requirements of diameter apply to single, solid and round cooper wire. The AWG value of multi-stranded wires depends on the total CSA (Cross Sectional Area) of all wires.

Kedacom Two (2) Year Limited Hardware Warranty

WHAT IS COVERED BY THIS WARRANTY?

Kedacom warrants the Kedacom-branded hardware product and accessories contained in the original packaging (hereinafter referred to as "Kedacom Product") against defects in materials and workmanship when used normally in accordance with Kedacom's published guidelines for a period of TWO (2) YEARS from the date of original retail purchase in areas other than mainland China by the end-user purchaser (hereinafter referred to as "Warranty Period"). For the Kedacom Product purchased in mainland China, see the simplified Chinese version of this warranty for details. Kedacom's published guidelines include but are not limited to information contained in technical specifications, user guides, and service communications.

The preceding applies unless otherwise agreed in the contract.

WHAT IS NOT COVERED BY THIS WARRANTY?

This warranty does not apply to any non-Kedacom branded hardware products or any software, even if packaged or sold with Kedacom hardware. Manufacturers, suppliers, or publishers, other than Kedacom, may provide their own warranties to you but Kedacom, in so far as permitted by law, provides their products "AS IS". Software distributed by Kedacom with or without the Kedacom brand (including, but not limited to system software) is not covered by this warranty. Please refer to the licensing agreement accompanying the software for details of your rights with respect to its use. Kedacom does not warrant that the operation of the Kedacom Product will be uninterrupted or error-free. Kedacom is not responsible for damage arising from failures to follow instructions relating to the Kedacom Product's use.

This warranty does not apply: (a) to consumable parts, such as batteries, unless failure has occurred due to a defect in materials or workmanship; (b) to cosmetic damage, including but not limited to scratches, dents, and broken plastic on ports; (c) to damage caused by use with another product; (d) to damage caused by acts outside the control of Kedacom, including without limitation acts of God, accidents, abuse, misuse, fire, storms, earthquakes, flood, or other external cause; (e) to damage caused by exposure of the product to heat, bright light, sun, liquids, sand, or other contaminants; (f) to damage caused by operating the Kedacom Product outside Kedacom's published guidelines; (g) to damage caused by service (including upgrades and expansions) performed by anyone other than a representative of Kedacom, Kedacom employee, or authorized Kedacom agent; (h) to an Kedacom Product that has been modified to alter functionality or capability without the written permission of Kedacom; (i) to defects caused by normal wear and tear or otherwise due to the normal aging of the Kedacom Product, or (j) if any serial number has been removed or defaced from the Kedacom Product.

YOUR RESPONSIBILITIES

If your Kedacom product is capable of storing data and other information, you should make periodic backup copies of the information contained on the storage media to protect the contents and as a precaution against possible operational failures.

Before receiving warranty service, Kedacom or its authorized agents may require that you furnish proof of purchase details, respond to questions designed to assist with diagnosing potential issues, and follow Kedacom's procedures for obtaining warranty service. Before submitting your Kedacom Product for warranty service, you should maintain a separate backup copy of the contents of its storage media, remove all personal information that you want to protect, and disable all security passwords.

During warranty service, it is possible that the contents of the Kedacom product's storage media will be lost, replaced or reformatted. In such an event, Kedacom and its authorized agents are not responsible for any loss of data or other information contained on the storage media or any other part of the Kedacom product serviced.

Following warranty service, your Kedacom Product or a replacement product will be returned to you as your Kedacom Product was configured when originally purchased, subject to applicable updates. You will be responsible for reinstalling all other data and information. Recovery and reinstallation of other data and information are not covered under this warranty.

WHAT WILL KEDACOM DO IF THE WARRANTY IS BREACHED?

If during the Warranty Period, you submit a valid claim to Kedacom or an authorized Kedacom agent, Kedacom will, at its option, (i) repair the Kedacom Product using new or previously used parts that are equivalent to new in performance and reliability, or (ii) exchange the Kedacom Product for a refund of your purchase price.

A Kedacom replacement part or product, including a user-installable Kedacom part that has been installed in accordance with instructions provided by Kedacom, assumes the remaining warranty of the Kedacom Product or ninety (90) days from the date of replacement or repair, whichever provides longer coverage for you. When a product or part is replaced or a refund provided, any replacement item becomes your property and the replaced or refunded item becomes Kedacom's property.

Kedacom reserves the right to refund the purchase price as its exclusive warranty remedy.

HOW TO OBTAIN WARRANTY SERVICE?

To seek warranty service, please contact a local authorized Kedacom agent. When contacting the agent via telephone, other charges may apply depending on your location.

User Information

Complete the form below and keep for ready reference.

User Name:	
Address:	Postal Code:
Tel:	Mobile:
Fax:	E-Mail:
Product Name:	Product Model:
Date of Purchase:	

客户咨询热线：400-828-2866

KEDACOM

苏州科达科技股份有限公司

Suzhou Keda Technology Co.,Ltd.

中国: 江苏省苏州市高新区金山路131号(215011)

Tel: +86-512-6841 8188 Fax: 86-512-68412699

Suzhou Keda Technology Co.,Ltd.

Singapore: 627A Aljunied Road, #09-07, BizTech Centre, Singapore 389842

Tel: +65-6842-5700 Fax: +65-6842-5900

05.03.800926 (V1.2) 20200507